



India Meteorological Department
Earth System Science Organisation
(Ministry of Earth Sciences)

BULLETIN NO.: 45 (BAY OF BENGAL 01/2020)

TIME OF ISSUE: 1230 HOURS IST

DATED: 22.05.2020

FROM: INDIA METEOROLOGICAL DEPARTMENT (FAX NO. 24643965/24699216/24623220)

TO: CONTROL ROOM, NDM, MINISTRY OF HOME AFFAIRS (FAX.NO. 23093750)

CONTROL ROOM NDMA (FAX.NO. 26701729)

CABINET SECRETARIAT (FAX.NO.23012284, 23018638)

PS TO HON'BLE MINISTER FOR S & T AND EARTH SCIENCES (FAX NO.23316745)

SECRETARY, MOES, (FAX NO. 24629777)

H.Q. (INTEGRATED DEFENCE STAFF AND CDS) (FAX NO. 23005137/23005147)

DIRECTOR GENERAL, DOORDARSHAN (23385843)

DIRECTOR GENERAL, AIR (23421105, 23421219)

PIB MOES (FAX NO. 23389042)

UNI (FAX NO. 23355841)

D.G. NATIONAL DISASTER RESPONSE FORCE (NDRF) (FAX NO. 26105912, 2436 3260)

DIRECTOR, PUNCTUALITY, INDIAN RAILWAYS (FAX NO. 23388503)

CHIEF SECRETARY, WEST BENGAL (FAX NO. 033-22144328)

CHIEF SECRETARY, GOVT. OF ODISHA (FAX NO. 0674 -2536660)

CHIEF SECRETARY, GOVT. OF ASSAM (FAX NO. 0361-2237200)

CHIEF SECRETARY, GOVT. OF MEGHALAYA (FAX NO. 0364 - 2225978)

CHIEF SECRETARY, GOVT. OF SIKKIM (FAX NO. 03592 -204323)

Sub: Super Cyclonic Storm 'AMPHAN' (pronounced as UM-PUN) weakened into a Well Marked Low Pressure Area over north Bangladesh and neighbourhood.

The Depression [remnant of the Super Cyclonic Storm 'AMPHAN'] moved slightly northwards during past 06 hours and further weakened into a **Well Marked Low Pressure Area** over north Bangladesh & neighbourhood at 2330 hrs IST of today, the 21st May 2020. It is very likely to continue to move north-northeastwards and weaken further into a low pressure area during next 12 hours.

(1) Heavy rainfall Warning:

Assam & Meghalaya: Light to moderate rainfall at most places with heavy to very heavy at isolated places very likely over west Assam and isolated heavy falls over Meghalaya during next 06 hours.

Arunachal Pradesh: Light to moderate rainfall at most places with heavy to very heavy falls at isolated places very likely during next 06 hours.

(2) Wind warning

Squally wind speed reaching 30 to 40 kmph gusting to 50 kmph very likely over Western Assam & Western Meghalaya during next 06 hours and reduce gradually thereafter.

This is the last bulletin for this system. However, regular bulletin will continue from National Weather Forecasting Centre, IMD New Delhi.

(Shobhit Katiyar)
Scientist-C, RSMC, New Delhi

Copy to: RMC Guwahati/ ACWC Kolkata

Spatial rainfall distribution: Isolated: <25%, A few: 26-50%, Many: 51-75%, Most: 76-100%
Rainfall amount (mm): Heavy rain: 64.5 – 115.5, Very heavy rain: 115.6 – 204.4, Extremely heavy rain: 204.5 or more.

SAT : INSAT-3D IMG

21-05-2020/(1800 to 1826) GMT

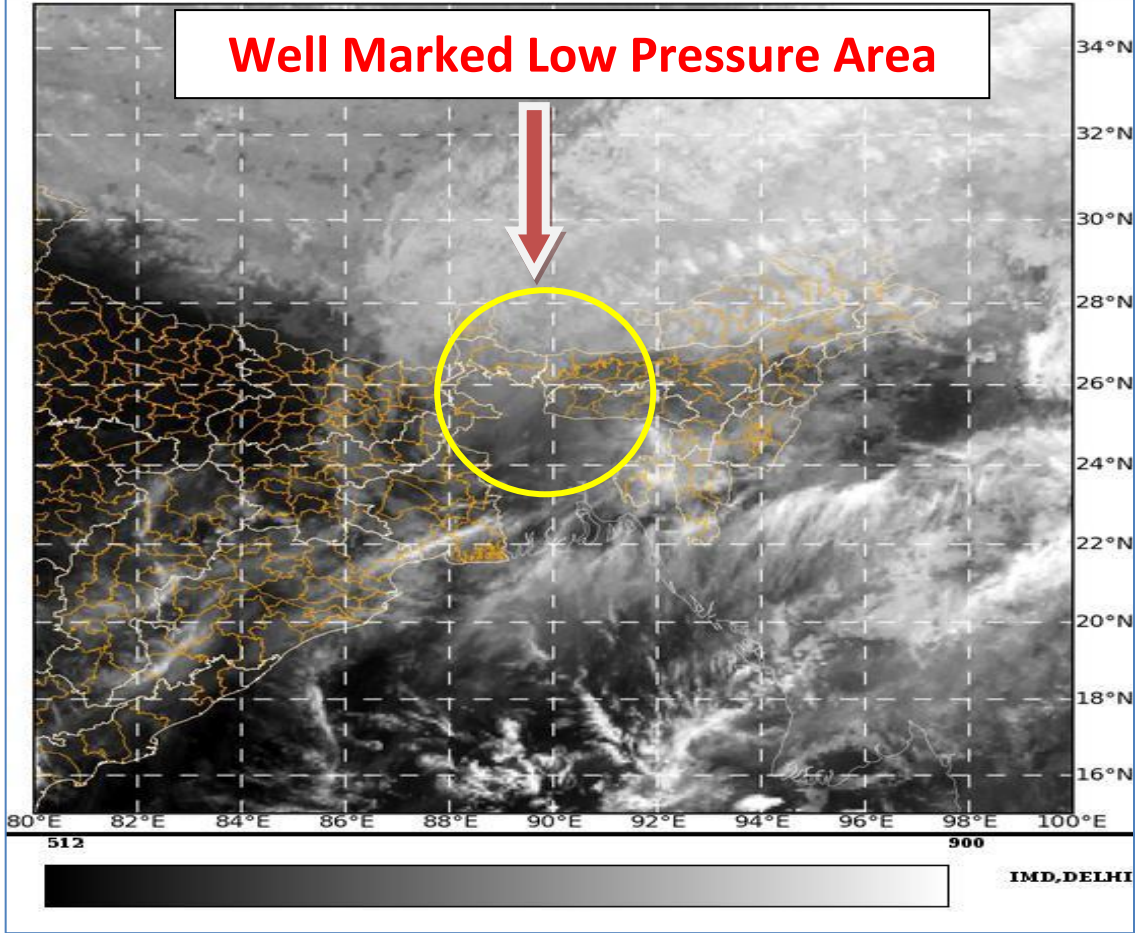
IMG_TIR1 10.8 um

21-05-2020/(2330 to 2356) IST

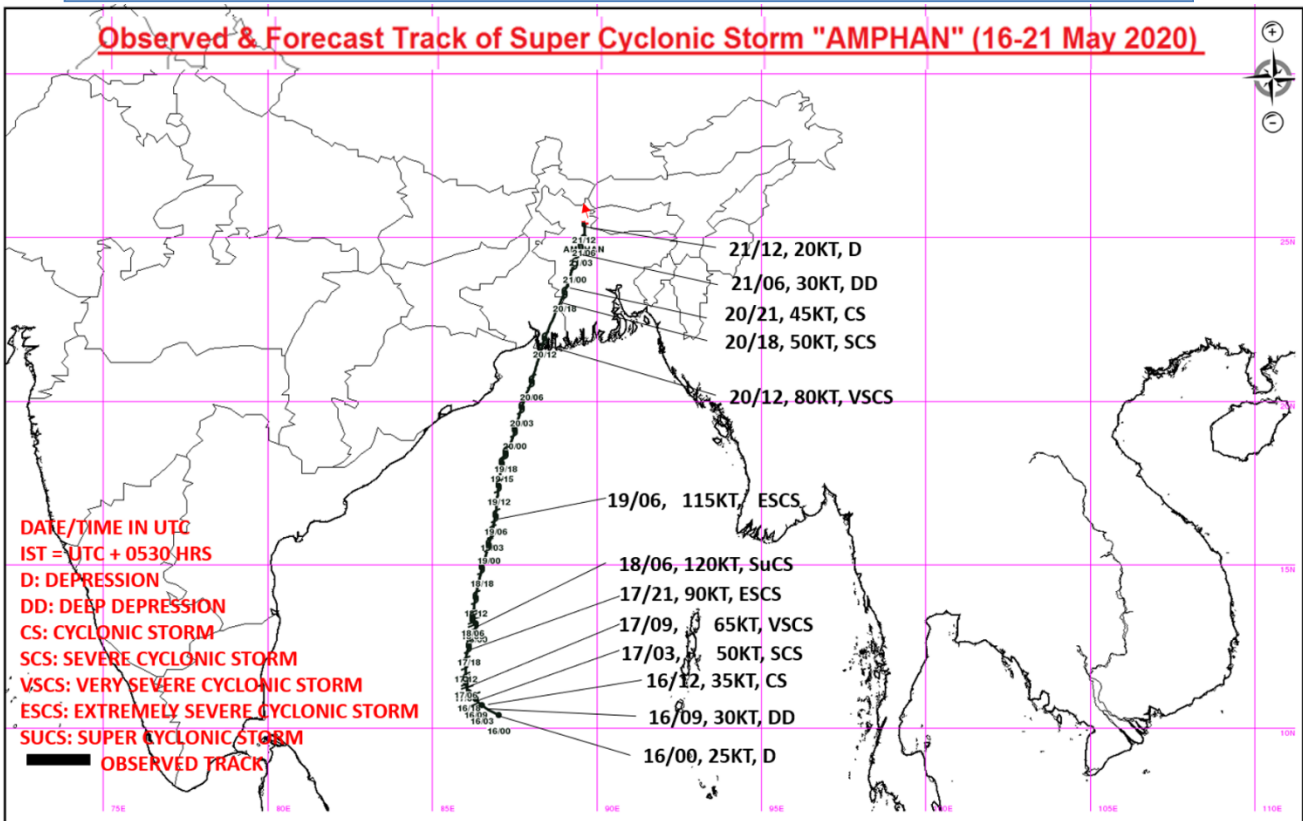
NEQ



Well Marked Low Pressure Area



Observed & Forecast Track of Super Cyclonic Storm "AMPHAN" (16-21 May 2020)



Spatial rainfall distribution: Isolated: <25%, A few: 26-50%, Many: 51-75%, Most: 76-100%

Rainfall amount (mm): Heavy rain: 64.5 – 115.5, Very heavy rain: 115.6 – 204.4, Extremely heavy rain: 204.5 or more.